



Garden City, New York

News

- Front Page**
- Community
- Schools
- Sports
- Obituaries
- Letters
- The View From Here
- From The Mayor's Office
- Archive
- Services
- Contact Us**
- Subscription Order
- Advertising
- Advertisers Index**
- Classifieds**
- Classified Order
- Garden City Real Estate Listings**

Search Archive

Copyright©2004 - 2008
 The Garden City News
 All Rights Reserved

E-mail Us

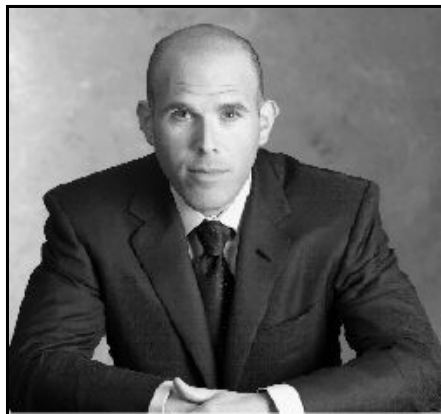


Newspaper web site content management software and services

DMCA Notices

Community

Chamber To Hear About Lighthouse Project



Scott Rechler, Chairman and CEO of Rex-Corp

Village, the Chamber of Commerce continues to provide programs as venues for project representatives to speak on undertakings that may impact the Village of Garden City.

At its season finale luncheon on Wednesday, May 14, Noon, at the Garden City Hotel, the Chamber will welcome as guest speaker, Scott Rechler, Chairman and CEO of RexCorp, a multi-million dollar private real estate company which was formed subsequent to the merger of Reckson Associates Realty Corp ("Reckson"), with SL Green, one of the largest public real estate management buyouts in REIT history. Mr. Rechler is also a Principal of the Lighthouse Development Group which proposes the "Lighthouse at Long Island." According to Scott Rechler, the Lighthouse Project will reflect the highest levels of "smart growth" planning by creating neighborhoods on a pedestrian scale.

The estimated \$2 billion 150-acre Lighthouse Planned Development District will include the rezoning and transformation of the Veterans Memorial Nassau Coliseum, various housing products, of-fice space, complementary retail, conference and exhibition space plus Long Island's first 5-star hotel. The Lighthouse Development Group looks upon the 24/7 suburban center as "yet

In order to provide information to Garden City's business and residential communities about proposed projects that impact the entire

April 25, 2008

Ads by Yahoo!

[garden city michigan florist](#)

Cindy Florist- Family owned and operated for over 10 years. Gauranteed. Cindyflorist.com

[Garden City, ID Mobile Home](#)

Search by Size, Price, & Location. Find Your New Real Estate Today. Realtor.com

[Garden city Kansas apt online](#)

Find Your Garden City Apartment. Get Virtual Tours & Expert Advice. Move.com

[Divorce Law Firm in Garden](#)

Keith, Shapiro & Ford. Experienced aggressive representation. long-island

Click ads below for larger version

McMAHON REALTY, INC.
 AFRONTIER REALTY GROUP
 342-9900 • 342-5400
 Exclusive Open Houses

Taylor-Warner Realty
 THE BEST LOCAL REAL ESTATE SERVICE

ANDERSON REALTY GROUP
 342-9900 • 342-5400

another milestone for Long Island - the reinvention of suburbia propelling Long Island into the future with a distinctive suburban center."

Scott Rechler will offer an overview to reflect the current project status along with its "Big Seven Benefits to Long Islanders."

Mr. Rechler's vision and leadership guided Reckson where he served as CEO and Chairman of the Board during its years of dynamic growth throughout Long Island, New Jersey, New York City, Westchester and Connecticut, overseeing in excess of \$6 billion in acquisitions and developments and managing over 20 million square feet of commercial property in New York's Tri-State area.

The Chamber luncheon program will begin at 11:30 a.m. with a networking reception and showcase of various member businesses. Luncheon will be served promptly at 12:30. Advance reservations are required at \$60 per person for Chamber members; \$65 for non-members. There will be open seating with tables of 8 or 10 reserved upon request. Showcase exhibitors may re-serve at \$50; a discounted \$100 for exhibitors staying for lunch. Sponsorships offering many benefits are available. To reserve, call (516) 746-7724, etc. 101; mail checks payable to the Garden City Chamber of Commerce to 230 Seventh Street; or register on line at www.GardenCityChamber.org.



[System and Method for Display Ads have a Patent Pending.](#)
[Click Here for More Information](#)